

Reference

1. Barber, FA, et al. Biomechanical Analysis of Pullout Strengths of Rotator Cuff and Glenoid Anchors: 2011 Update. 2011
2. Rodriguez J, et al. Biomechanical Comparison Of Placement Density Traditional Anchors. 2014
3. Kramer J, et al. Analysis of Glenoid Inter-anchor Distance with an All-Suture Anchor System. 2016
4. Data supplied by DSM Dyneema
5. Data supplied by Teleflex Medical
6. Testing performed by Arthrex, OCT. 2000
7. Swan KG, et al. Arthroscopic Suture Material and Knot Type. 2009
8. Cole BJ, Et al. Surgical Technique of the Shoulder, Elbow, and Knee in Sports Medicine. Chapter 5. 2013
9. Willemot L, et al. Radiological and Clinical Outcome of Arthroscopic Labral Repair with All-Suture Anchors
10. Agrawal V, et al. Triple Labrum Tear Repaired with the JuggerKnot™ Soft Anchor: Technique and Results. 2015
11. Data on file at Biomet Sports Medicine

Jugger Knot

全縫線錨釘



结果

Result

超乎想象

Beyond

Imagination



剛

高抗力

1.4mm JuggerKnot較3mm複合性可吸收固定錨釘有更強的抗拉力¹。另外有生物力學實驗證明，小口徑的Anchor之排列間隔可以比傳統Anchor更緊密²。肩盂部位的實驗結果表示，在不影響其固定力的情況下，1.4mm JuggerKnot之間間隔只需2mm³。換言之，高密度排列的全縫線縫合錨釘提升總體抗拉力²。



韌

超韌性

MaxBraid PE Suture由百分之百超高分子聚乙烯組成，材質強度為鋼鐵的15倍⁴。抗拉強度達69磅⁵，而在另外的實驗表示外科縫線#2 Ethibon™ Excel的抗拉強度為27磅⁶。MaxBraid Suture的Single Load to Failure達246N⁷，搭配全縫線免結式JuggerKnot，除了固定力強，並使手術更加簡約快速⁸。

A large, expressive calligraphic stroke in black ink dominates the left side of the page. A surgical anchor is positioned diagonally across the center, with its handle pointing towards the top left and its shaft extending towards the bottom right. The anchor's body is white with a textured surface. The background is white with scattered black ink splatters.

柔

全縫線

JuggerKnot屬於軟性全縫線錨釘，不帶硬質組件，避免傳統硬性錨釘位移等後遺症¹⁰，具開闊的放射成像視野可幫助肩盂唇重建手術進行¹⁰。全縫線錨釘所需的骨鑽孔通道明顯比典型縫線錨釘的小，減少肩盂部位骨折的風險⁹。在至少兩年的術後追蹤結果顯示，全縫線錨釘之骨鑽孔通道有骨纖維癒合的復原結果¹⁰。

A large, expressive calligraphic stroke in black ink dominates the right side of the page. A surgical anchor is positioned diagonally across the center, with its handle pointing towards the top right and its shaft extending towards the bottom left. The anchor's body is white with a textured surface. The background is white with scattered black ink splatters.

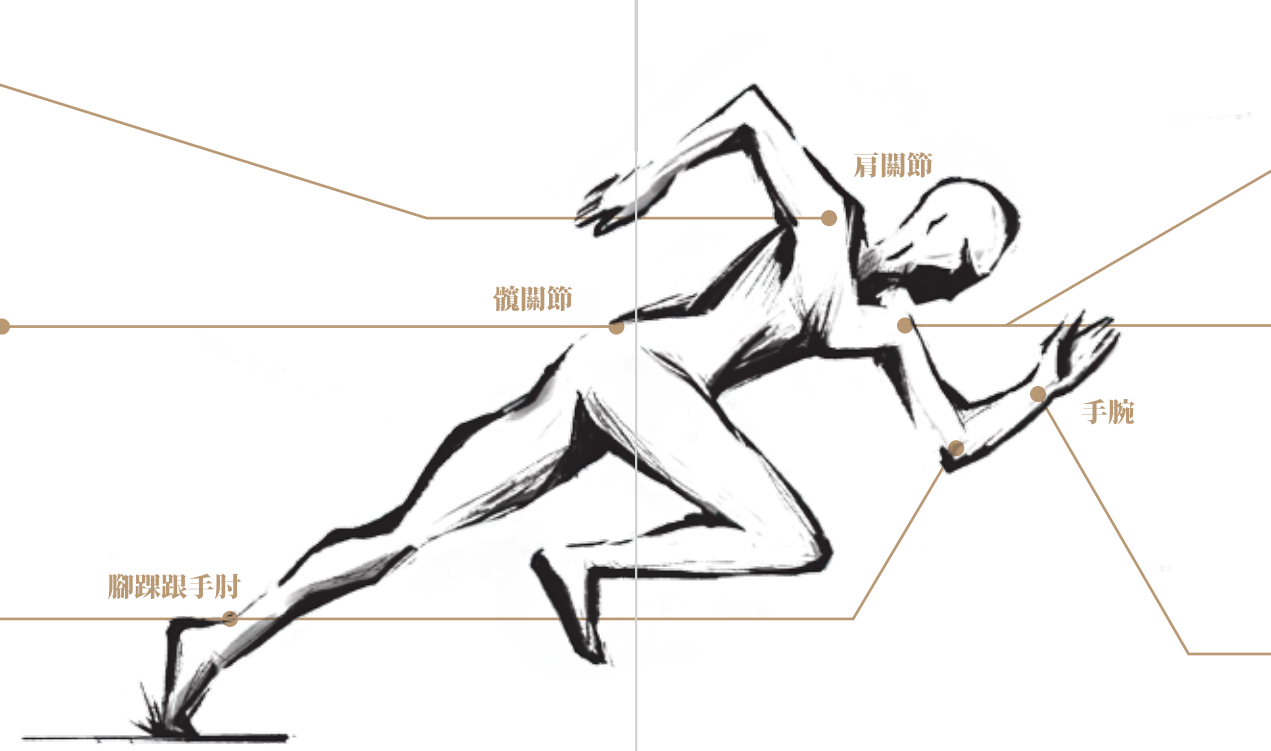
精

小直徑

與使用在同部位的傳統3mm PEEK Anchor相比，1.4mm的JuggerKnot減少69%的骨缺損¹¹。除了對骨頭傷害較小以外，小直徑錨釘允許多點軟組織固定¹⁰。高密度的排列方式保留更多Native Footprint²。此外，在肩盂唇與旋轉肌袖的double-row suture anchor修補手術中，較小的骨缺損也保留更多Tissue-Bone癒合面積²。

全面配備

精準定位



1.5mm JuggerKnot

具備65磅拉伸強度，並配備繞曲定位器械及鑽頭置中器械，適用於Bankart/ SLAP傷害修補。

1.45mm 長版 JuggerKnot

具備70磅拉伸強度，並配備繞曲定位器械，適用於髖臼唇修補。

1.45mm 短版 JuggerKnot

具備78磅拉伸強度，適用於足踝關節及手肘關節。

2.9mm Double Loaded JuggerKnot

具備117磅拉伸強度並提供帶針或不帶針選項，適用於旋轉肌撕裂修補。

2.1mm JuggerKnotless

全縫線免結式錨釘，具備57磅拉伸強度，適用於Bankart/ SLAP 傷害修補。

1mm JuggerKnot Mini

小尺寸All Suture Anchor，為手腕及手指關節所設計，尾端配有兩條帶針縫線使手術更有效率。

號

Clinical & MRI Outcome

植入JuggerKnot之 Triple Labrum Tear患者兩年追蹤

此文獻2015年發表於International Journal of Shoulder Surgery, 針對18名植入1.4mm JuggerKnot的Triple labrum患者進行術後2年評估。Triple Labrum Tear又稱360° Labrum Tear, 為全範圍關節唇剝離, 需進行大規模修補¹⁰。

研究方法

病病人數

1 17

平均年齡
36.4 歲

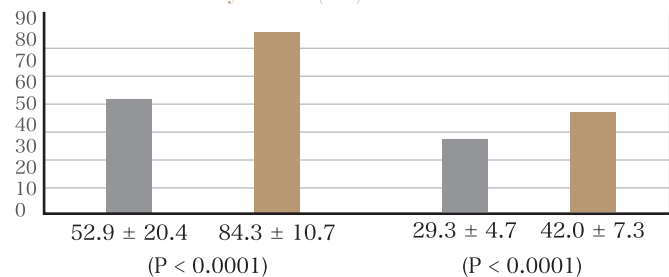
18名病患接受1.4mm JuggerKnot進行關節唇修補。作者將Labrum分為Anterior Part, Posterior Part, 及 Superior Part, 18名病患在每一個Part都有Labrum剝離的情況。兩年隨訪臨床結果分別使用Constant-Murley肩關節功能評分量表(CS)及肩功能適性量表(FLEX-SF)評分系統。

結果

CS量表及FLEX-SF量表皆顯示病患肩關節功能明顯改善, 所有病患術後可返回受傷前所參與之運動等級, 術後MRI顯示鑽孔通道有骨癒合或骨纖維癒合的情況, 且無軟骨下囊腫生成及擴孔跡象。

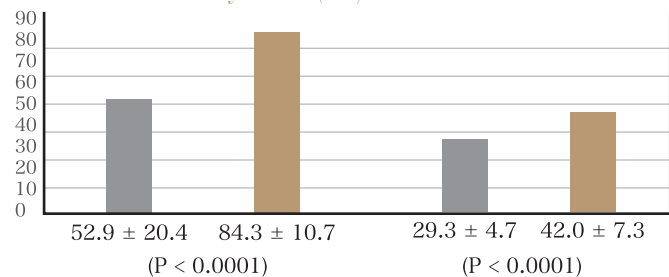
肩關節功能評分量表

Constant Murley Score (CS)



肩功能適應量表

FLEX-SF Outcomes



Ordering Information

僅供醫療專業人員參考, 嚴禁轉發或外流

Item	Description	Item	Description
	JuggerKnotless Soft Anchors	912000	JuggerKnot Soft Anchors Single Loaded Implant System 1#1 Maxbraid- Blue/White
110005198	JuggerKnotless Soft Anchor 2.1 mm	912030	JuggerKnot Soft Anchors JuggerKnot Single Loaded 1#1 Maxbraid-Blue/White 1.4 mm
110005199	JuggerKnotless Soft Anchor 2.1 mm 10pk	912010	JuggerKnot Soft Anchors JuggerKnot Single Loaded 1#1 Maxbraid-Blue/White 1.4 mm 10pk
110003182	Juggerknotless Disposable Low Profile Drill bit 2.1mm (Sterile)	912031	JuggerKnot Soft Anchors JuggerKnot Single Loaded 1 #2 Maxbraid-Blue/White 1.5 mm
110003172	Juggerknotless Low Profile Disposable kit 2.1 mm (Sterile)	912015	JuggerKnot Soft Anchors JuggerKnot Single Loaded 1 #2 Maxbraid-Blue/White 1.5 mm 10pk
	JuggerKnot Mini Soft Anchor	916030	JuggerKnot Soft Anchors JuggerKnot Long #1 1 #1 Maxbraid-Blue/White 1.45mm
912076	JuggerKnot Soft Anchor-1.0 mm w/ 2-0 Needles w/ Drill	010000334	JuggerKnot Soft Anchors JuggerKnot Long #1 1 #1 Maxbraid-Blue/White 1.45mm 10pk
912080	JuggerKnot Soft Anchor-1.0 mm w/ 2-0 Needles 10pk	010000324	JuggerKnot Soft Anchors JuggerKnot Long #2 1 #2 Maxbraid-Blue 1.45 mm
912082	JuggerKnot Soft Anchor-1.0 mm w/ 3-0 Needles w/ Drill	010000335	JuggerKnot Soft Anchors JuggerKnot Long #2 1 #2 Maxbraid-Blue 1.45 mm 10pk
912084	JuggerKnot Soft Anchor-1.0 mm w/ 3-0 Needles 10pk	912068	JuggerKnot Soft Anchors JuggerKnot Short 1 #1 Maxbraid-Blue/White with Needles 1.4 mm
	JuggerKnot Soft Anchors	912069	JuggerKnot Soft Anchors JuggerKnot Short 1 #1 Maxbraid-Blue/White with Needles 1.4 mm 10pk
912029	JuggerKnot Soft Anchors JuggerKnot Double Loaded 2 #2 Maxbraid- Blue, Blue/White 2.9 mm	110005307	JuggerKnot Soft Anchors JuggerKnot Short Rigid Size 1 1 #1 Maxbraid- Blue/ White Contains Drill Bit 1.45 mm
912529	JuggerKnot Soft Anchors JuggerKnot Double Loaded 2 #2 Maxbraid- Blue, Blue/White 2.9 mm 10pk	110005315	JuggerKnot Soft Anchors JuggerKnot Short Rigid Size 2 1 #2 Maxbraid- Blue Contains Drill Bit 1.45 mm
110005093	JuggerKnot Soft Anchors JuggerKnot Double Loaded 2 #2 Maxbraid- Blue, Blue/White Cutting Needle Needles- Short Inserter 2.9 mm	110005319	JuggerKnot Soft Anchors JuggerKnot Short Rigid Size 1 1 #1 Maxbraid-Blue/White 10pk
110005096	JuggerKnot Soft Anchors JuggerKnot Double Loaded 2 #2 Maxbraid- Blue, Blue/White Tapered Needles- Short Inserter 2.9 mm	110005320	JuggerKnot Soft Anchors JuggerKnot Short Rigid Size 2 1 #2 Maxbraid-Blue 10pk
110005241	JuggerKnot Soft Anchors JuggerKnot Double Loaded 2 #2 Maxbraid- Blue, Blue/White Cutting Needles- Short Inserter 2.9 mm 10 pk		
110005242	JuggerKnot Soft Anchors JuggerKnot Double Loaded 2 #2 Maxbraid- Blue, Blue/White Tapered Needles- Short Inserter 2.9 mm 10pk		